

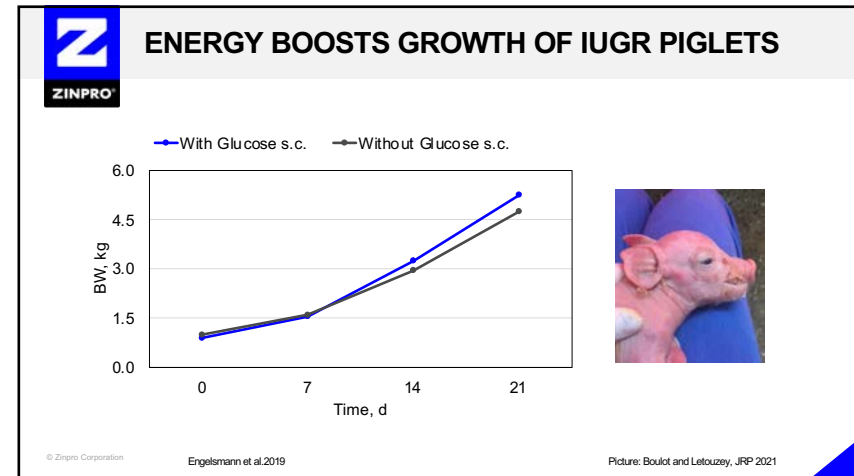
Welcome to the 13<sup>th</sup>  
FeetFirst® Swine Seminar

**TOWARDS THE ROBUST PIG**  
Understanding & Managing Piglet  
Birth Weight Variation

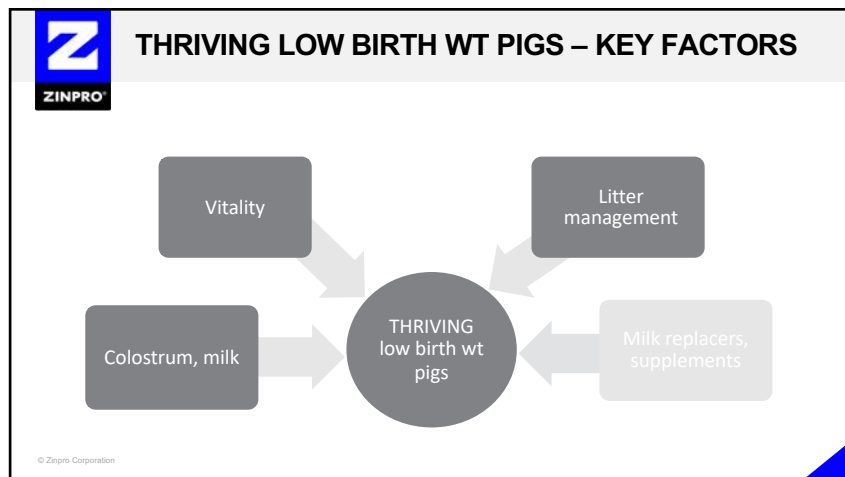


**ZINPRO®**  
ADVANCING  
PERFORMANCE  
TOGETHER

1



2



3



**Dr Marrina Schuttert**  
Swine Veterinary Practitioner,  
The Netherlands

**Low birth weight piglets –  
success factors for mitigation  
from a practitioner's perspective**



**ZINPRO®**  
ADVANCING  
PERFORMANCE  
TOGETHER

4

DE VARKENS PRAKTIJK  
Een stap vooruit

## How to manage low birth weight piglets?

*A practitioners perspective*



13th FeetFirst Seminar April 2021  
Marrina Schuttert DVM

5

DE VARKENS PRAKTIJK  
Een stap vooruit

## Relevance

- Economic perspective
- Animal welfare
- Public en political support for pig-production



6

DE VARKENS PRAKTIJK  
Een stap vooruit

## Trends in birth weight




7

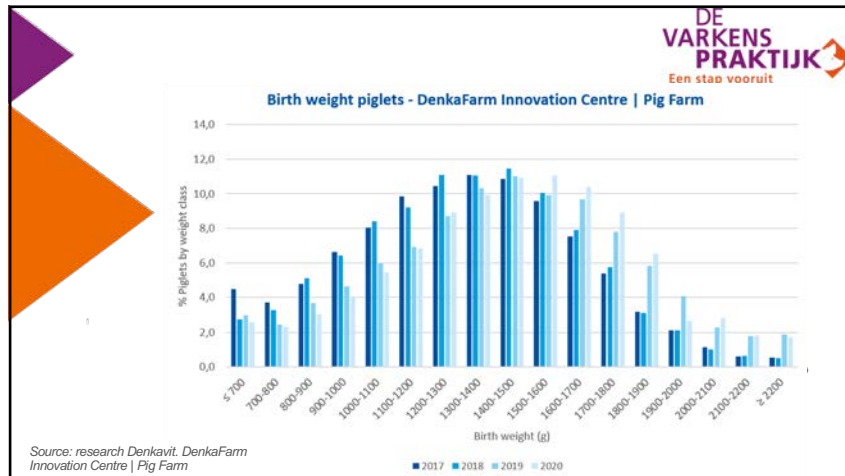
DE VARKENS PRAKTIJK  
Een stap vooruit

## Litter size

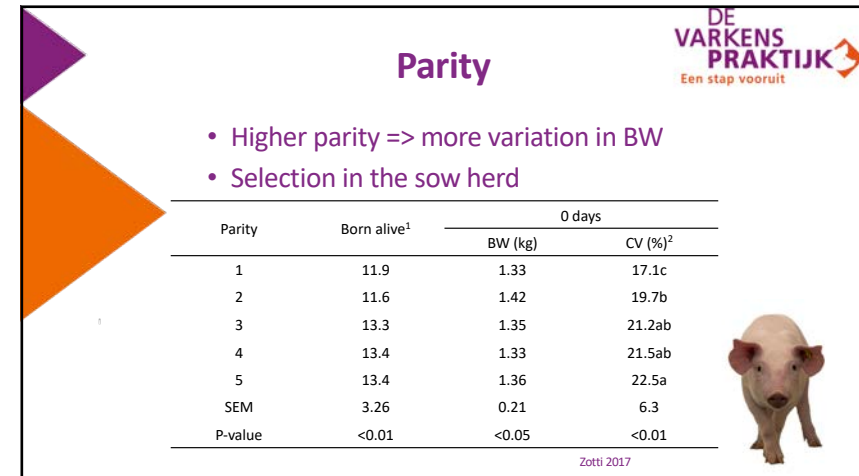
- Litter size increases (genetic selection)  
=> birth weight decreases
- +/- 1 piglet => +/- 40 grams average birth weight



8



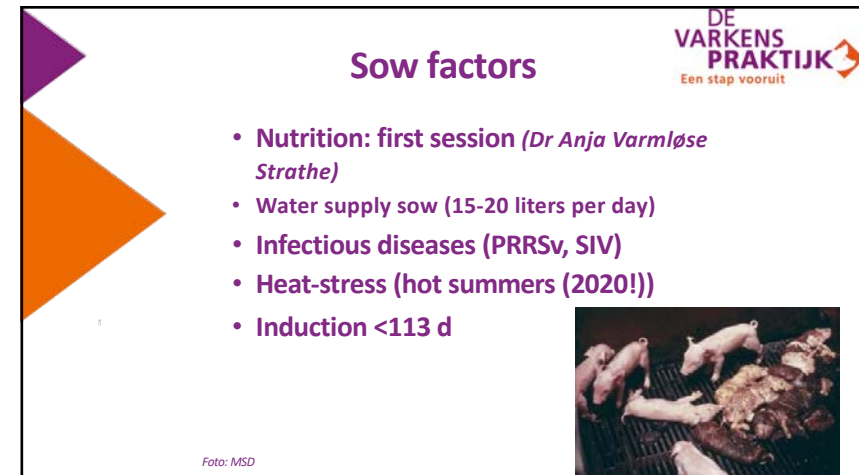
9



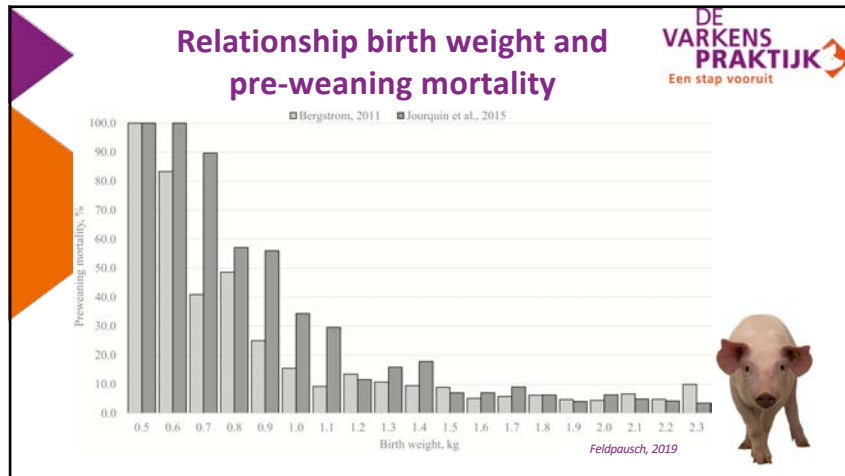
10



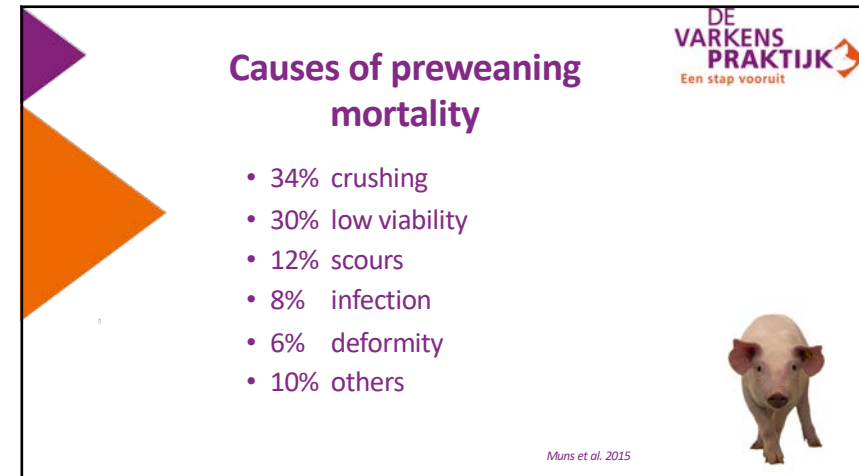
11



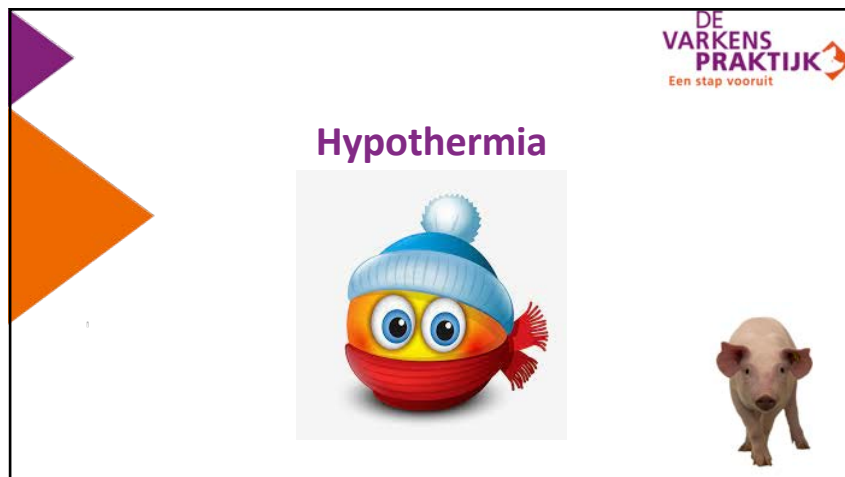
12



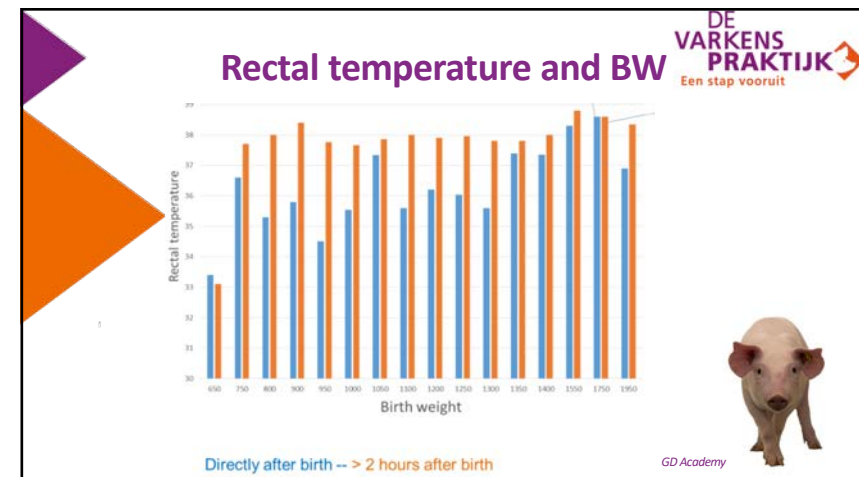
13



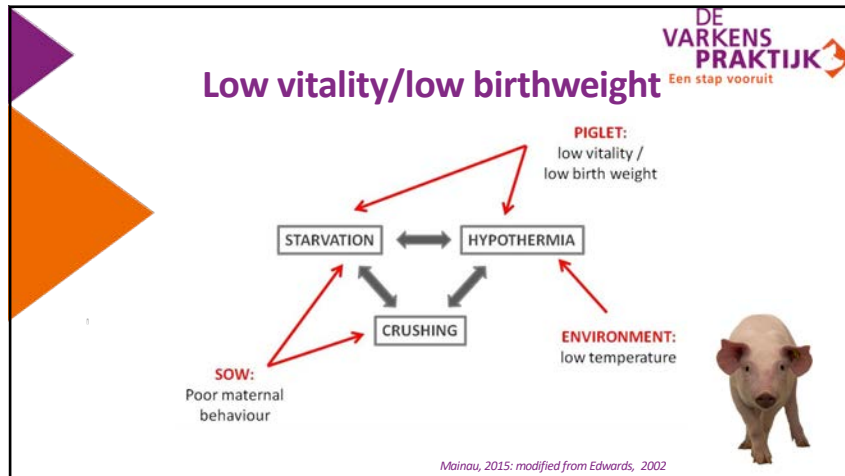
14



15



16



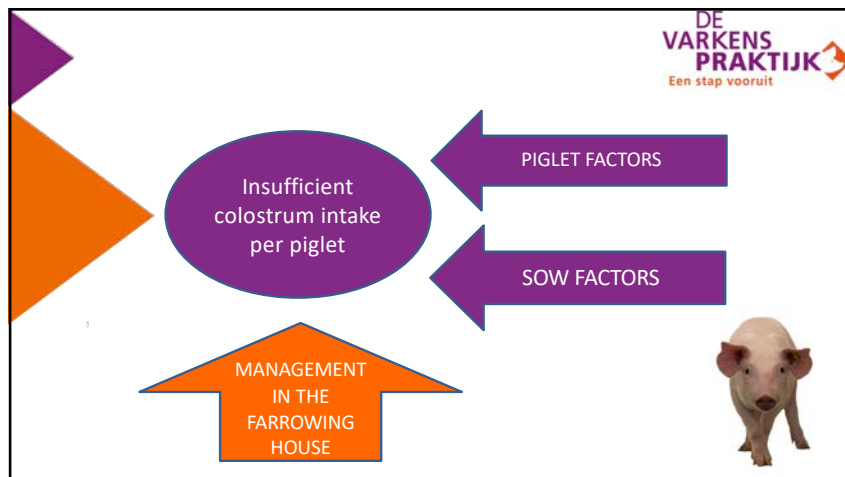
17

**Preparations**

DE VARKENS PRAKTIJK  
Een stap vooruit

- Clean and dry
- Temperature:
  - Farrowing room: 22-24 °C
  - Nest: 32-35 °C
- Sprinkle nests with lime (dry and disinfectant)

18



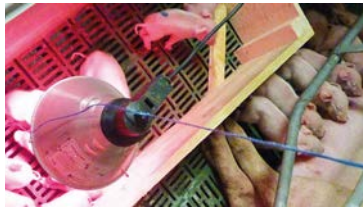
19



20

**Colostrum management (1)**

- 200- 250 gram per piglet (<200 grams => mortality rate over 40%)
- colostrum per sow highly variable (2,5 – 5,0 kg)




Moreira, 2017; Muns et al. 2015

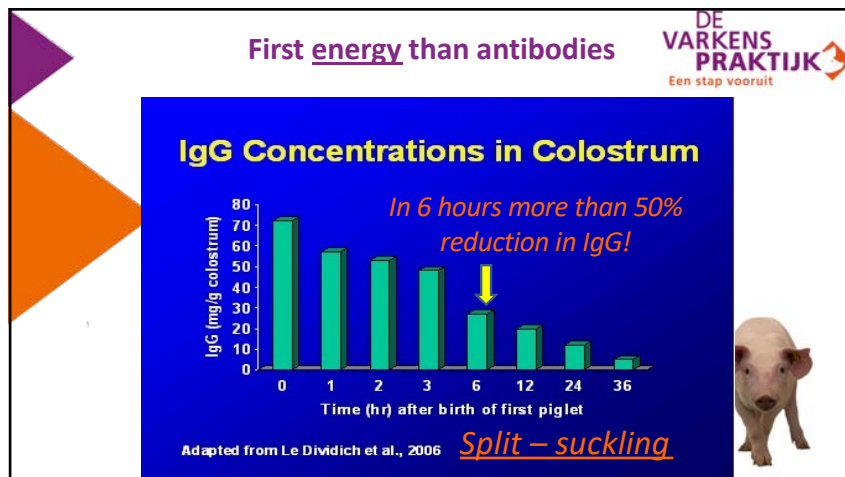
21

**Colostrum management (2)**

- Split suckling !
- >14 piglets => separate for 2-3 hours





22



23

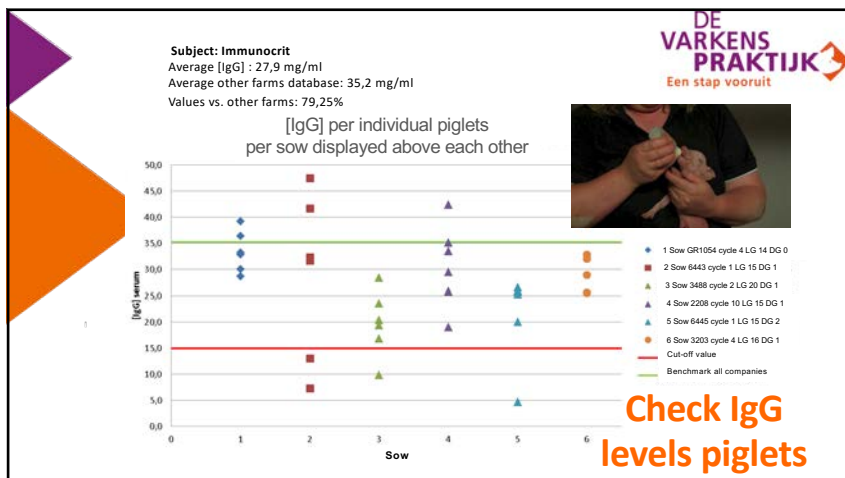
**Cross-fostering**

- After colostrum intake (split suckling) of maternal sow
- Foster of the larger piglets => often the first born piglets (*mark them after birth*)

24

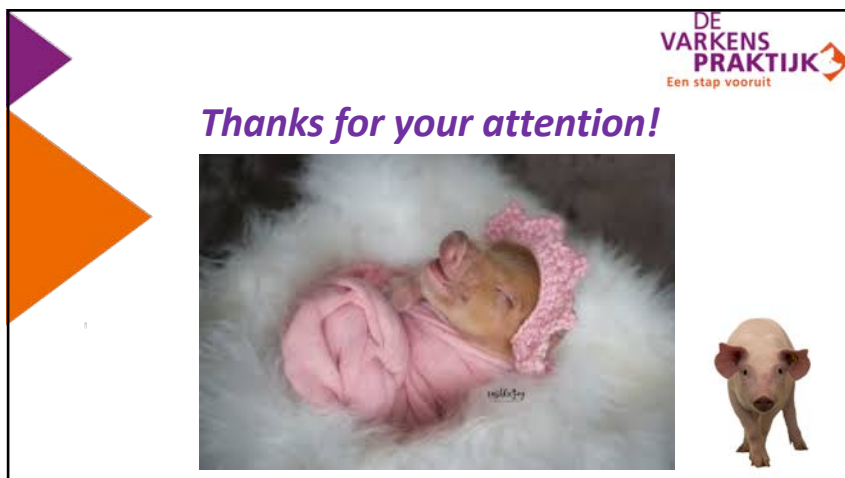




25



26

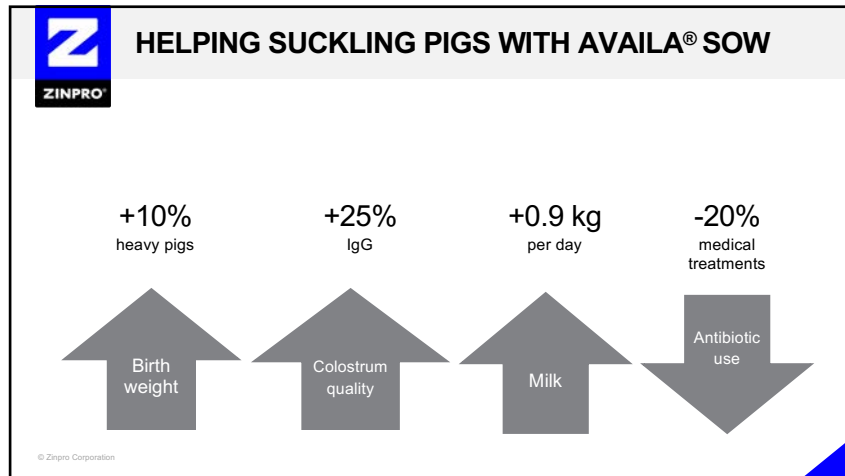


27

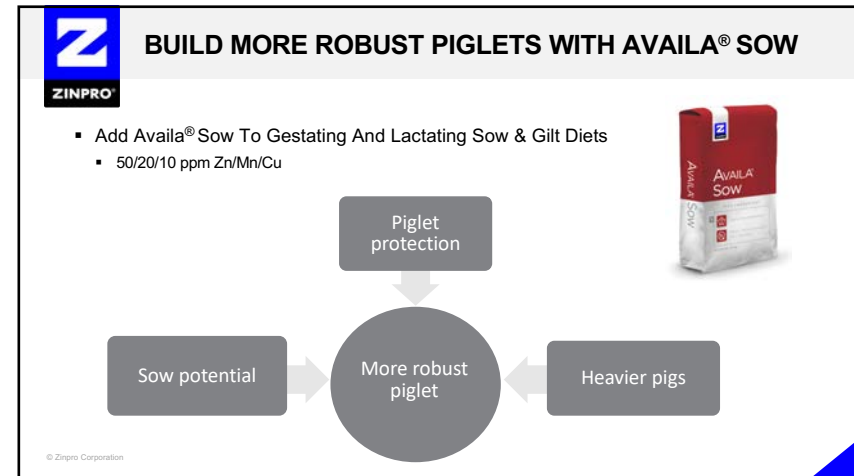
**Dr Christof Rapp**  
Swine Nutritionist – Technical Service  
Zinpro Corporation

**TOWARDS THE ROBUST PIG**  
Helping low birth weight pigs by sow  
trace mineral nutrition

28



29



30



31